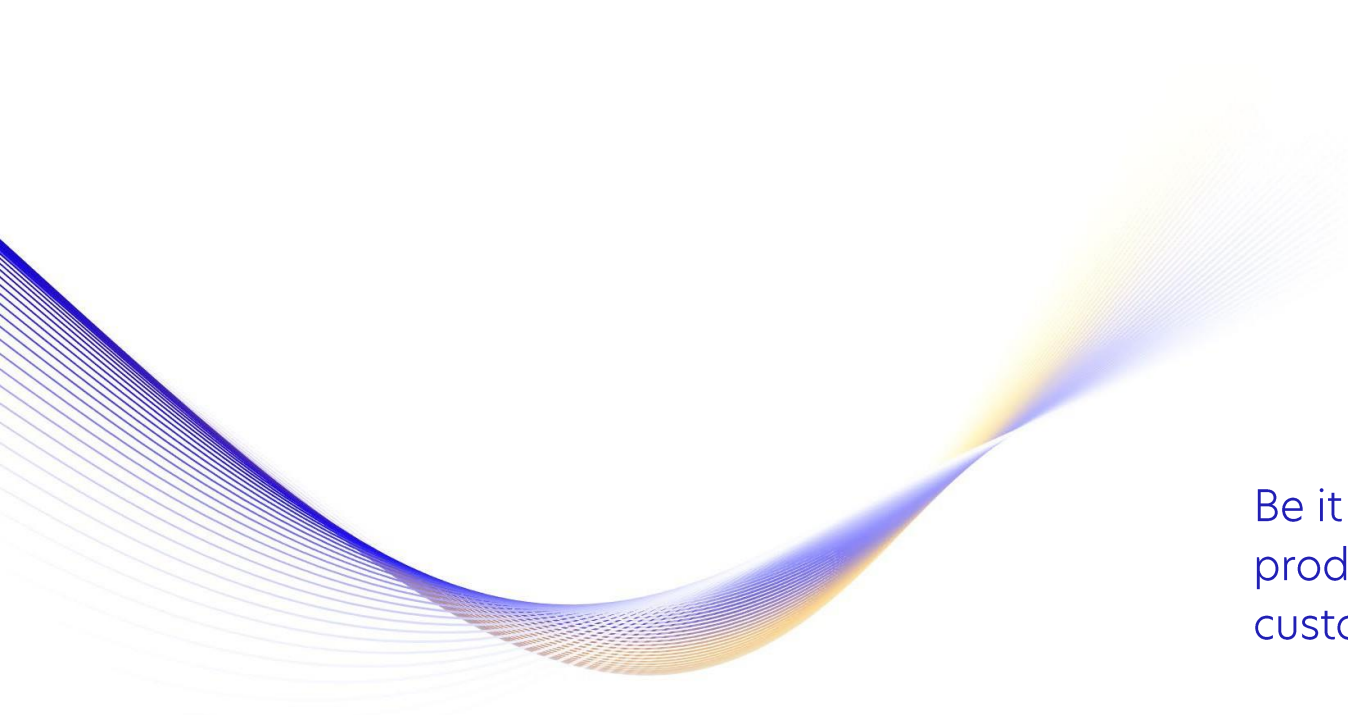




Delta Line

Moving together

Your global sub-3kW motion solution provider



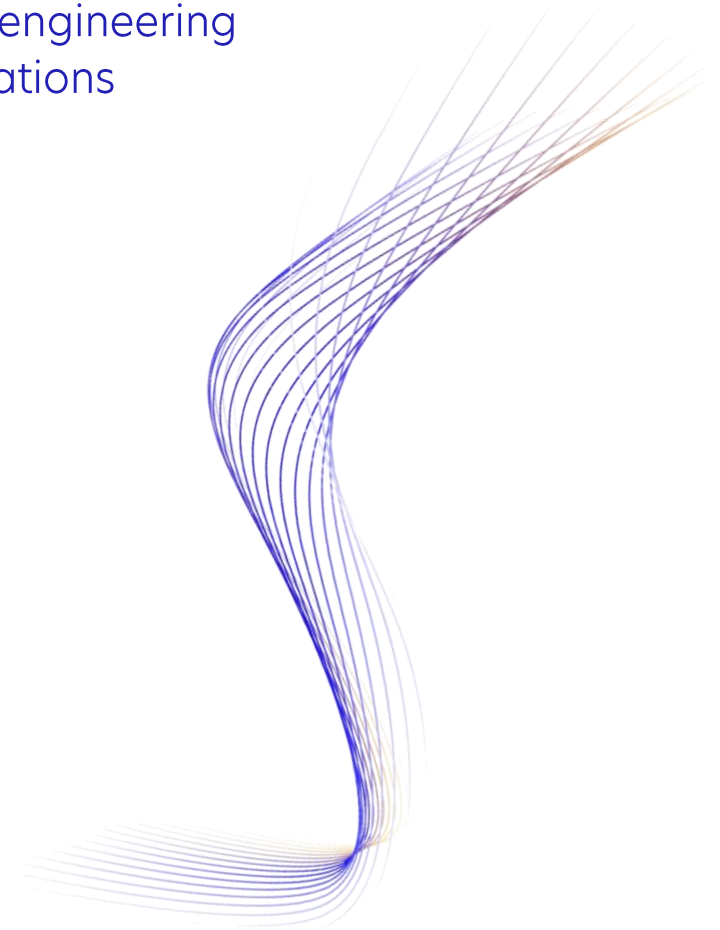
Be it a need for a simple standard product or a co-designed fully customized motion system.

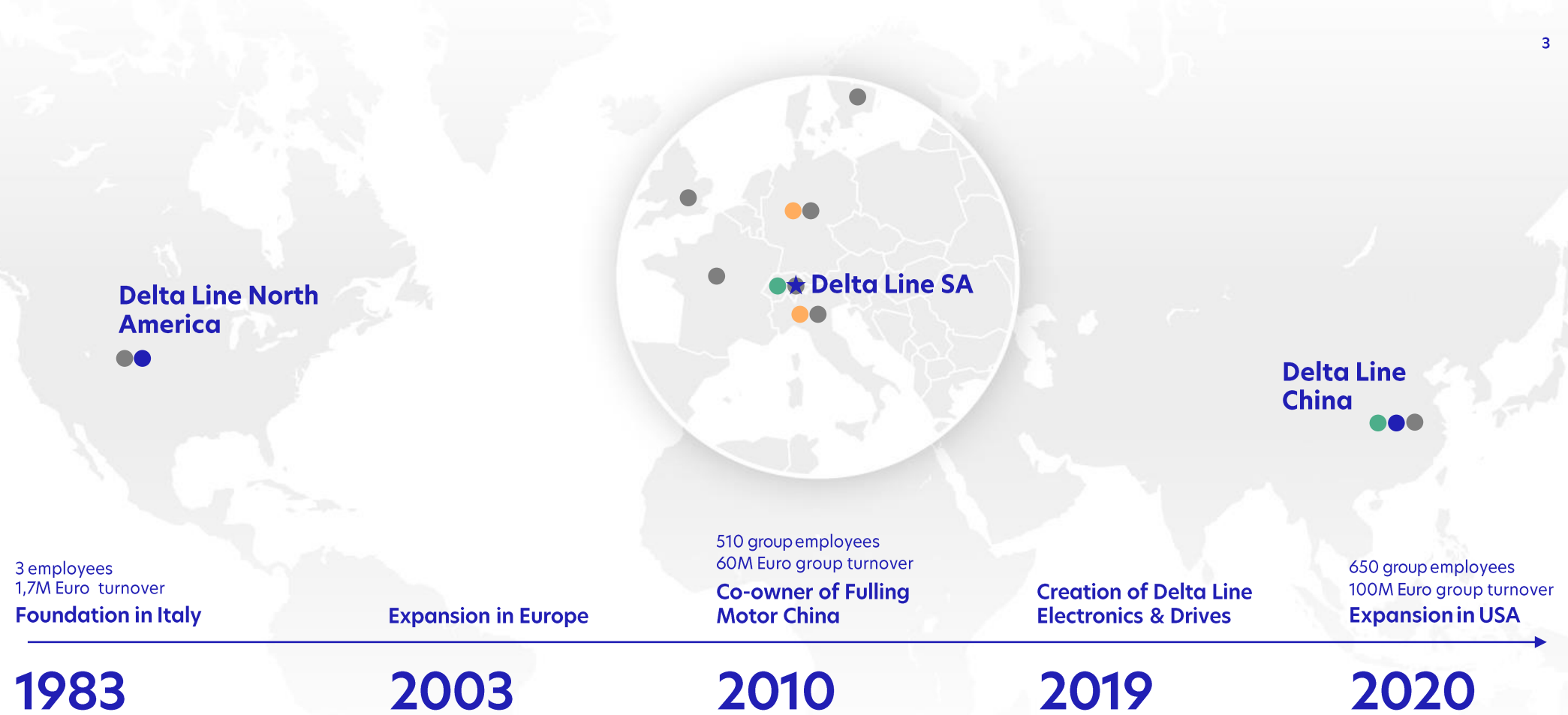
We want to be your trusted advisor and supplier when it comes to integrating motion solutions into your application.

Our mission

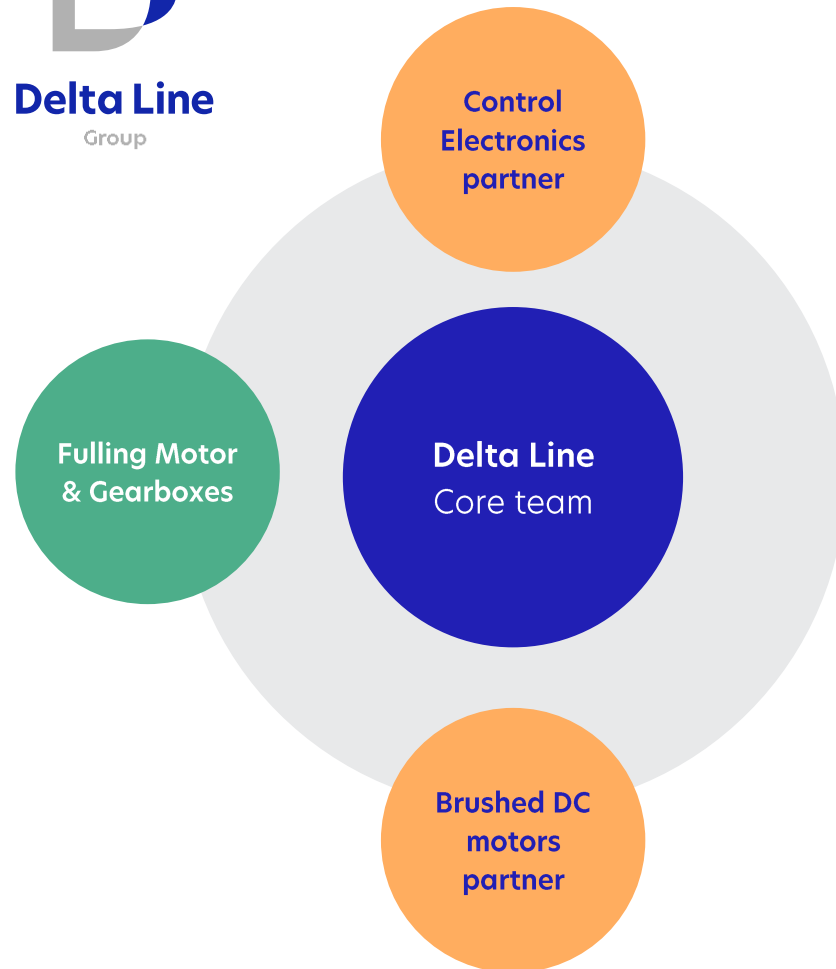
- 1.** Attention of a family company with functional capabilities of a large one
- 2.** Supply & Quality you can trust
- 3.** Flexible and Cost-effective solutions through collaborative engineering and efficient customizations
- 4.** One-stop motion supplier: wide technology portfolio and manufacturing control

Your benefits





Delta Line yesterday and today



- _ Agility and flexibility of a small company
- _ Comprehensive portfolio of technologies
- _ Attractive quality/price ratio
- _ Manufacturing flexibility and control

two carefully selected contract manufacturing partners

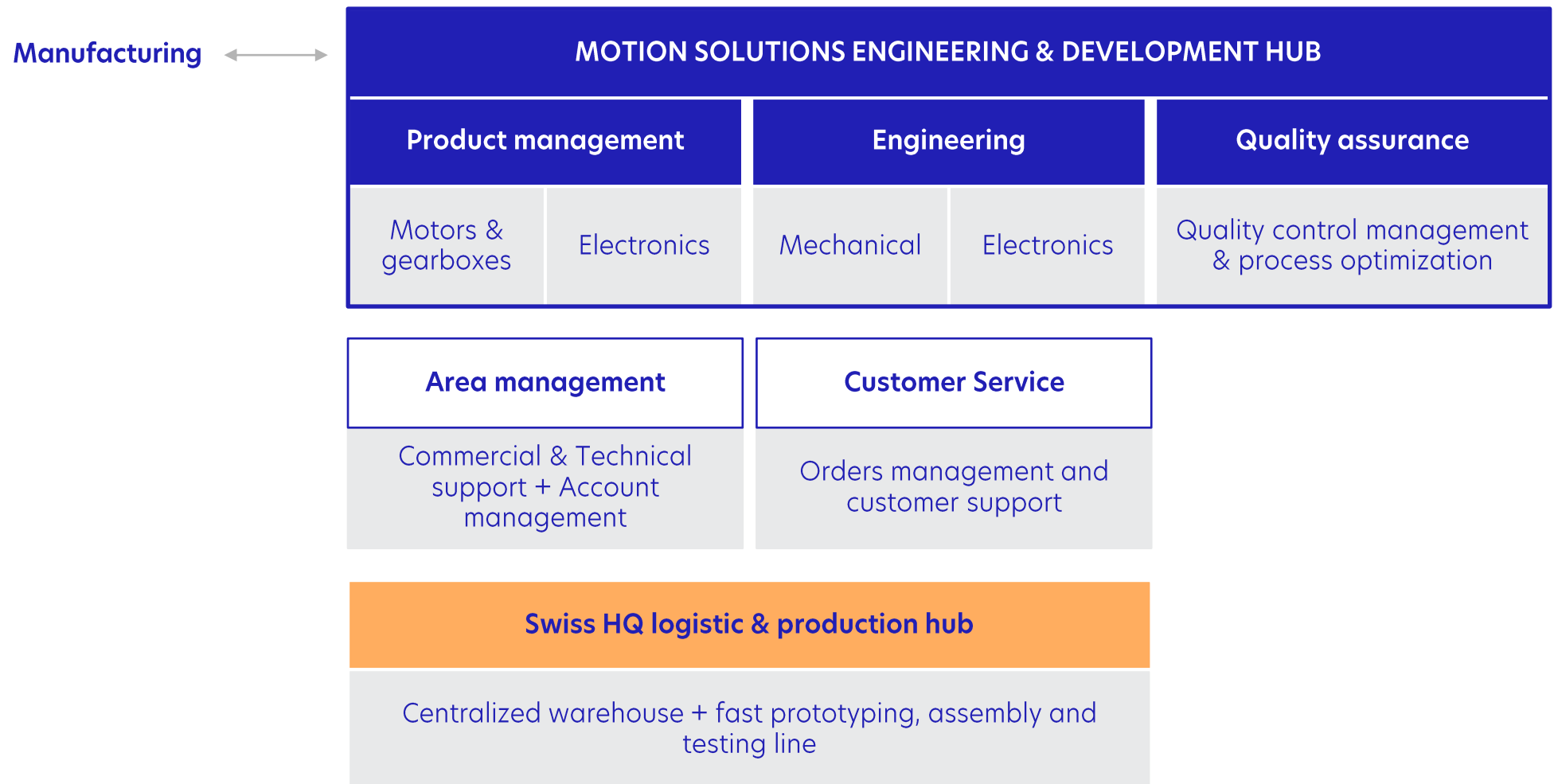
● **Contract manufacturing**

● **Co-owned manufacturing**

a lean cross-functional central team, which leads all projects

● **Core team**

A unique structure with many advantages



Delta Line Core team set up for collaborative engineering

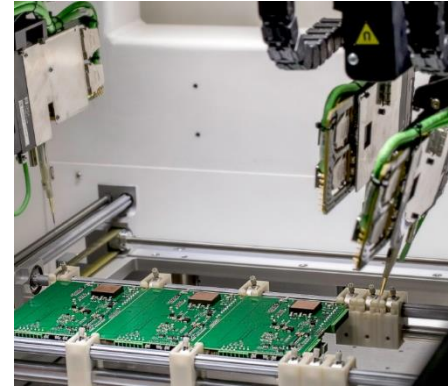


- _ Fulling Motor
- _ Location: Changzhou, China
- _ 30'000 sqm
- _ 600+ employees
- _ 5M+ yearly motors (BLDC, Stepper, Servo, Linear Actuators) & gearboxes
- _ ISO 9001 & 14001, IATF 16949, CE/UKCA certified, RoHS & REACH compliant

Motors and Gearboxes



- _ Contract manufacturer
- _ Location: Europe
- _ Brushed DC motors
- _ ISO 9001 & 14001, IATF 16949, CE/UKCA Certified, RoHS & REACH compliant



- _ Contract manufacturer
- _ Location: Italy
- _ Controllers/Drives
- _ ISO 9001, CE/UKCA certified, RoHS & REACH compliant, UL & STO on specific models

Electronics



- _ Delta Line HQ
- _ Location: Lamone, Switzerland
- _ 45 employees
- _ Integrated motors
- _ Customized motion systems
- _ 100k+ assembly per year
- _ ISO 9001 & 14001, CE/UKCA certified, RoHS & REACH compliant, UL & STO on specific models

Prototyping & assembly line

Our manufacturing facilities



- _ Coreless
- _ PMDC

Brushed DC Motors
Ø 8-63mm



- _ Slotted & Slotless
- _ Flat
- _ Frameless
- _ with encoder

Brushless DC Motors
Ø 10-115mm



- _ Medium voltage 220VAC
- _ Low voltage 48VDC

Servomotors
□ 38-130mm



- _ Hybrid
- _ Flat
- _ Hollow shaft
- _ with encoder

Stepper Motors
Nema 6-42 Ø 14-110mm



- _ External
- _ Captive
- _ Non-Captive

Linear Actuators
Nema 8-23

Motors



- _ for Stepper motors
- _ for Brushless motors

Controllers / Drives
Phase current 2 to 40A rms



- _ Speed Controller
- _ Motion Controller

BLDC, Servo & Stepper with Controller
Ø 16-80mm / □ 42-86mm



- _ Planetary
- _ Spur
- _ Wheel Hub

Gearboxes
Ø 8-80mm



- _ Standard variations
- _ Modular assembly
- _ Full custom

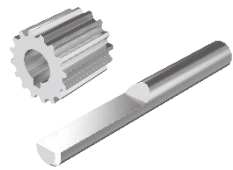
Customizations

Electronics

Gearboxes

Custom

Our products



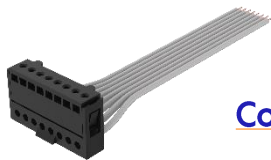
Shaft & Output



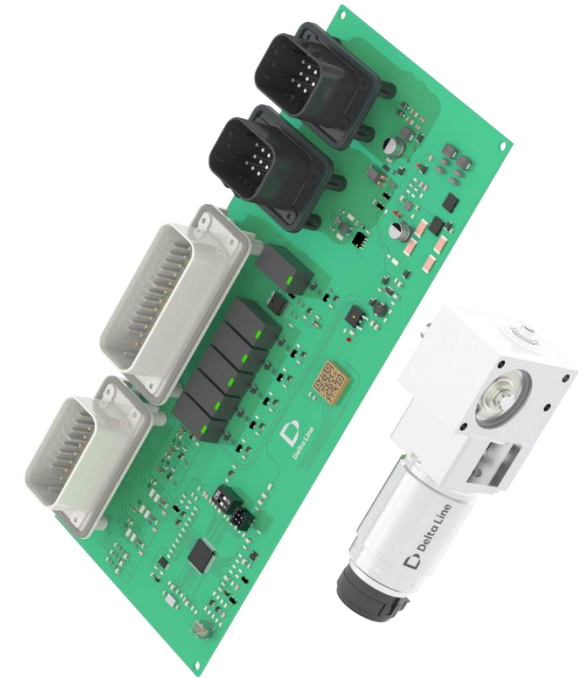
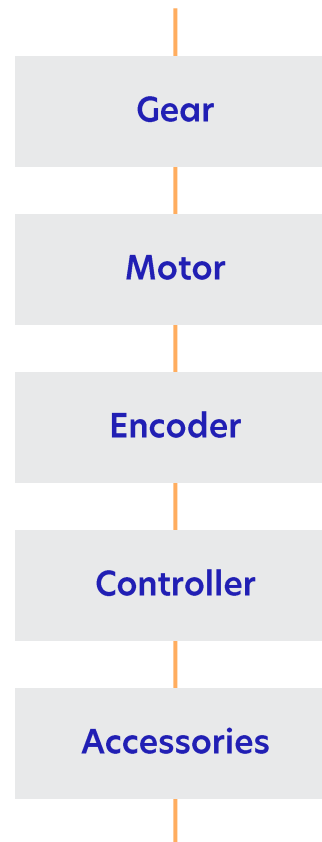
Windings



Bearings



Connectors



Fully customized motion system solutions, adapted to specific project needs and using bespoke components

Variation

Modular

Custom

Experienced in-house engineering team / Attractive MOQ / Fast development / Wide technologies portfolio

Customization capabilities

Centralized global warehouse in Switzerland next to our assembly line, safety stock, special commitment on long lead time components, easy import of products (no advance of VAT), worldwide shipments, drop-ship capabilities



Supply Chain

Our company processes are certified ISO9001 & 14001, and all our products undergo very high-quality standards and are CE/UKCA Certified and RoHS & REACH compliant

Product & Process

Quality & Supply you can trust

650 employees

120M Euro turnover

6M motors , gearboxes, drives

25+ countries

- _Healthcare
- _Robotics
- _Labelling & Packaging
- _Agriculture
- _Power tools
- _Industrial & Pumps
- _Intralogistics & Warehousing
- _Mobility
- _Security & Access
- _Textile

Markets & Applications



Delta Line



a Delta Line company

Brands

Delta Line Group

We'll get it moving!

Tell us about your project



Delta Line

Delta Line SA
Via Prè d'là, 1
CH-6814 Lamone
Switzerland

+41 (0)91 612 85 00
info@delta-line.com
www.delta-line.com

Headquarters

Delta Line North America, Inc
4600 South Syracuse, 9th
Floor Denver, CO 80237, USA

+1 303 256 6212

infous@delta-line.com

North America

Changzhou Delta Line
Trade Company Limited,
414 Building 1,
FuChen HuaYuan
New North District Changzhou,
Jiangsu, China

info@delta-line.com

Asia